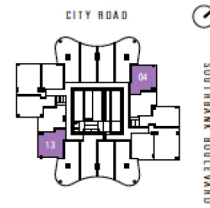
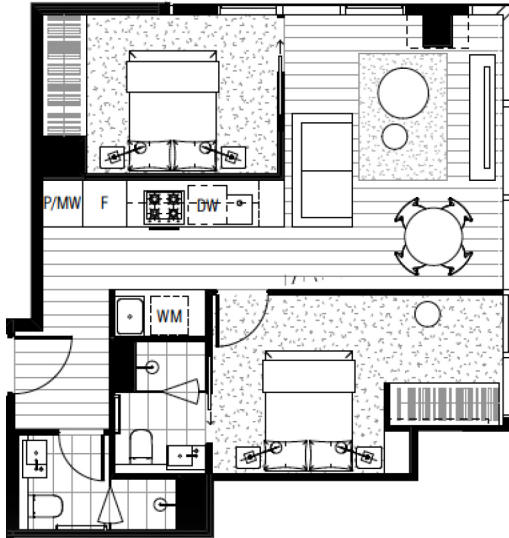


AUSTRALIA108

MELBOURNE



SKY RISE RESIDENCES

TYPE B2 - 2 BED + 2 BATH

AREAS	INTERNAL	TOTAL
LEVEL 14-27	59.6 M ² 641.5 ft ²	59.6 M ² 641.5 ft ²
LEVEL 28-41	59.7 M ² 642.6 ft ²	59.7 M ² 642.6 ft ²
LEVEL 44-56	60.6 M ² 652.3 ft ²	60.6 M ² 652.3 ft ²
LEVEL 57-67	60.6 M ² 652.3 ft ²	60.6 M ² 652.3 ft ²



Soaring to 101 levels above the city, Australia 108 will be the tallest building in Melbourne and home to the tallest apartments in the Southern Hemisphere.

Comprising 1105 apartments from levels 11 through to Level 100 with 3 levels of resident facilities, the tower volume will rise from a 10 level externally planted podium car park volume over ground floor retail areas.

Victoria, Australia

70 Southbank Blvd, Southbank VIC 3006, Australia



Price

AU\$ 680,000

Unit No

2304



021 2251 0288 | 08111 268 268 | 021 7278 7270

Sydney • Melbourne • Jakarta • Surabaya • Makassar • Kuala Lumpur

www.centurionpg.com.au